

The logo for Frontgate Avon is centered in a white square. It features a stylized mountain peak icon above the word "FRONTGATE" in a bold, sans-serif font, with the word "AVON" in a smaller font below it. The background of the entire image is a scenic view of a large, multi-story mountain resort building with a rustic, wood-clad exterior and numerous balconies. The building is situated at the base of a steep, densely forested mountain. In the foreground, a river flows through a lush, green valley. The sky is a mix of blue and orange, suggesting a sunset or sunrise.

FRONTGATE
AVON

A LIMITED COLLECTION OF MODERN MOUNTAIN RESIDENCES



BGV AVON, LLC



PROJECT OVERVIEW

LIVE THE LUXURY OF ADVENTURE

- Up to 75 Luxury Condominiums:
2-, 3-, 4- and 5-Bedroom Residences
- 9 Luxury Townhomes:
4-Bedroom Residences with Attached Garage
- 4-Story Residential Building
- Mountain Modern Design
- Resort-Style Amenities
- Located adjacent to the entrance of
Beaver Creek Resort
- Construction began in April of 2022
- Target Delivery Ski Season 2023-2024



RESIDENCE SELECTION

Up to 84 Luxury Residences*

- 32 | 2-Bedroom Condominiums
1,135 - 1,912 sf | Starting at \$1.925M
- 26 | 3-Bedroom Condominiums
1,905 - 2,320 sf | Starting at \$2.375M
- 17 | 4-Bedroom Condominiums
2,659 - 3,066 sf | Starting at \$3.210M
- 2 | 5-Bedroom Condominiums
2,662 sf | Starting at \$3.210M
- 9 | 4-Bedroom Townhomes
2,637 - 2,679 sf | Starting at \$3.650M



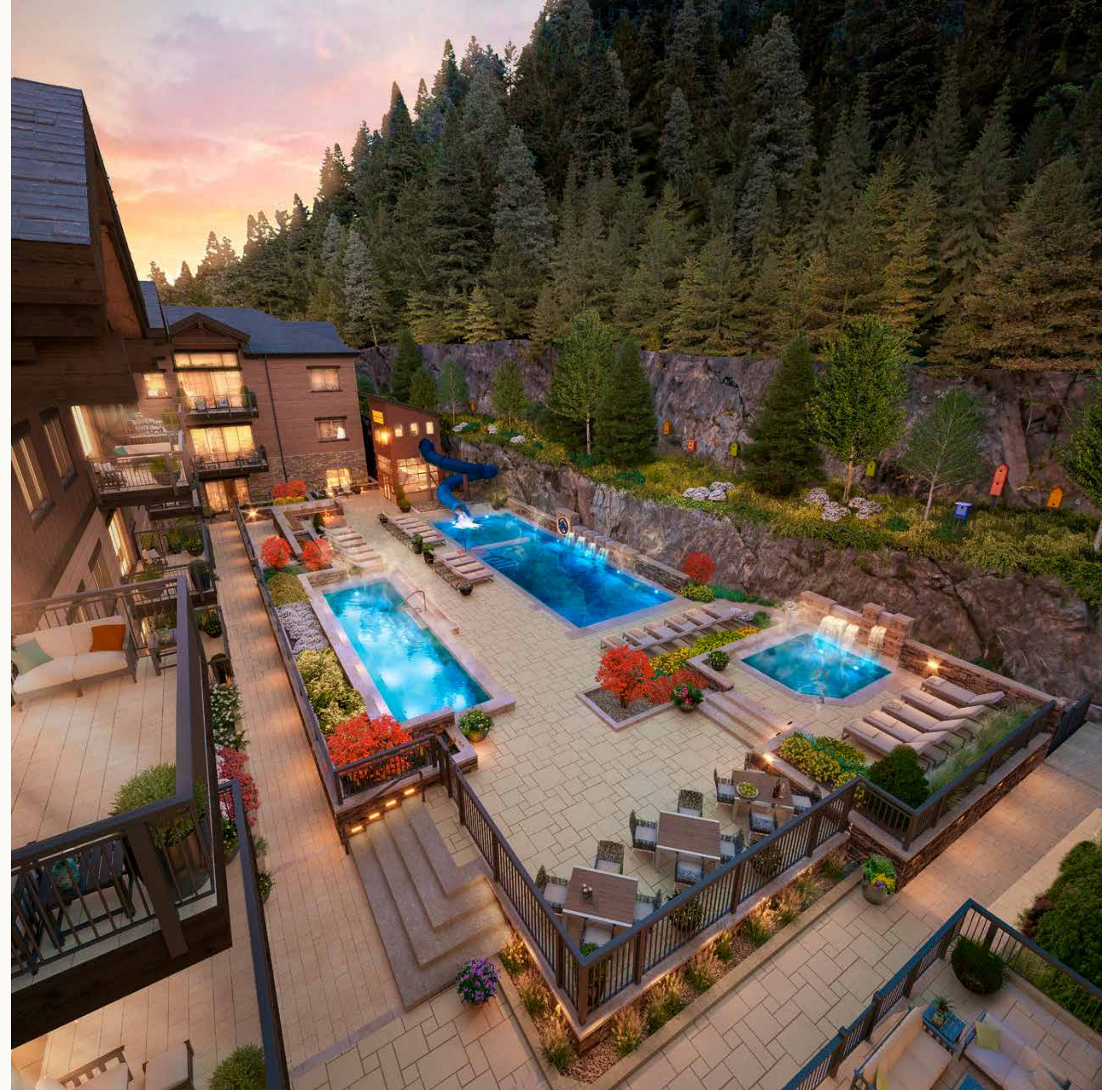
**Many of these floorplans also include a den and/or office.*



A night scene at a resort. In the foreground, a stone fire pit contains a bright fire. In the middle ground, a man and a woman are sitting in a hot tub, talking. A tray with drinks and flowers sits on the edge of the hot tub. To the right, a swimming pool is visible with a small waterfall. The background features a stone wall and a metal railing. The text "AMENITIES OVERVIEW" is overlaid in the center.

AMENITIES OVERVIEW

THE SPRINGS OUTDOOR OASIS & PIONEER PLUNGE



RIVERVIEW TERRACE



MOUNTAINSIDE COURTYARD



AMENITIES OVERVIEW

RECREATION

The Springs Outdoor Oasis & Pioneer Plunge

Residents and their guests will enjoy a one-of-a-kind, year-round outdoor aquatics experience

- **Big Spring** 15-person hot tub
- **Great Spring** 35-person hot tub
- **Pioneer Plunge** Large, state-of-the-art pool and water slide

Riverview Terrace

Spacious, elevated patio facing the Eagle River with fire pits, grills and outdoor gathering areas

Mountainside Courtyard

Expansive fire pits, dining areas and grills

Overlook Mountain Trail System

Hike the bluff for endless panoramic views of Bachelor Gulch, Beaver Creek Mountain ski area, and the western valley vistas

Community Bikes + eBikes

Hit the roads, trails, or head into town with community and environmentally friendly transportation

Golf Simulator*

Get in a practice round with friends before hitting the Vail Valley's world-class golf courses

Theater Room*

Enjoy the latest big screen releases in your own on-site movie theater

**Second amenity may be delivered in Phase II*



AMENITIES OVERVIEW

HEALTH & WELLNESS

- Private, state-of-the-art Techno Gym
- Mountainside outdoor fitness equipment
- State-of-the-art Air Sanitation System

CHILD + TEEN ACTIVITIES

- Mountainside Discovery Zone
- Trail Tales Library Nooks
- Gaming / Teen Room – Multiple VR Gaming Stations, Arcade*

OWNER CONVENIENCES

- Frontgate Market complete with grab n' go food options, staples, and libations
- 2 year-round Adventure Shuttles, one dedicated to Vail and one dedicated to Beaver Creek
- Private Resident Lockers + Storage
- Ski/Boot Storage + Locker Room
- Underground Heated Parking + Electric Vehicle Charging
- On-site Concierge / Property Management Services
- 2 Common Work Spaces
- Solar Energy Capture System to Minimize Energy Usage
- Car, Bike and Dog washes

**Second amenity may be delivered in Phase II*



SITE PLAN

1. Phase I Condominium Residences
2. Phase I Townhomes
3. Phase II Condominium Residences
4. Phase II Townhomes
5. Building Entry
6. Riverview Terrace
7. Mountainside Courtyard
8. Big Spring 15-Person Hot Tub
9. Heated Pool
10. Great Spring 35-Person Hot Tub
11. Pioneer Plunge Water Slide
12. Townhome Courtyard & Hot Tub
13. Overlook Mountain Trail
14. Mountainside Discovery & Fitness Zone





RESIDENCES

INTERIORS



KITCHEN



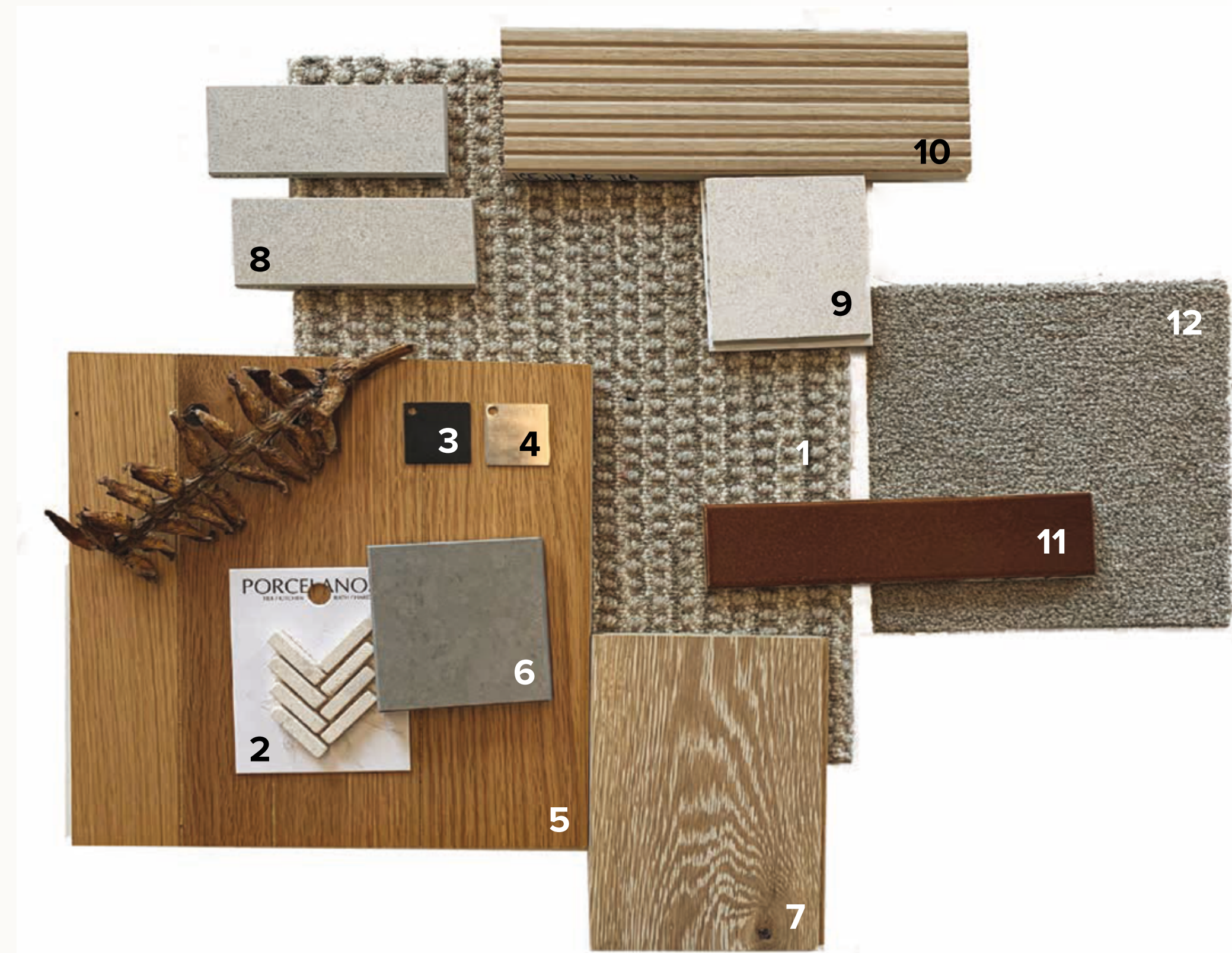
BEDROOM / BATH / BUNK ROOM



INTERIOR DESIGN PACKAGE (1)

SCANDINAVIAN WARMTH

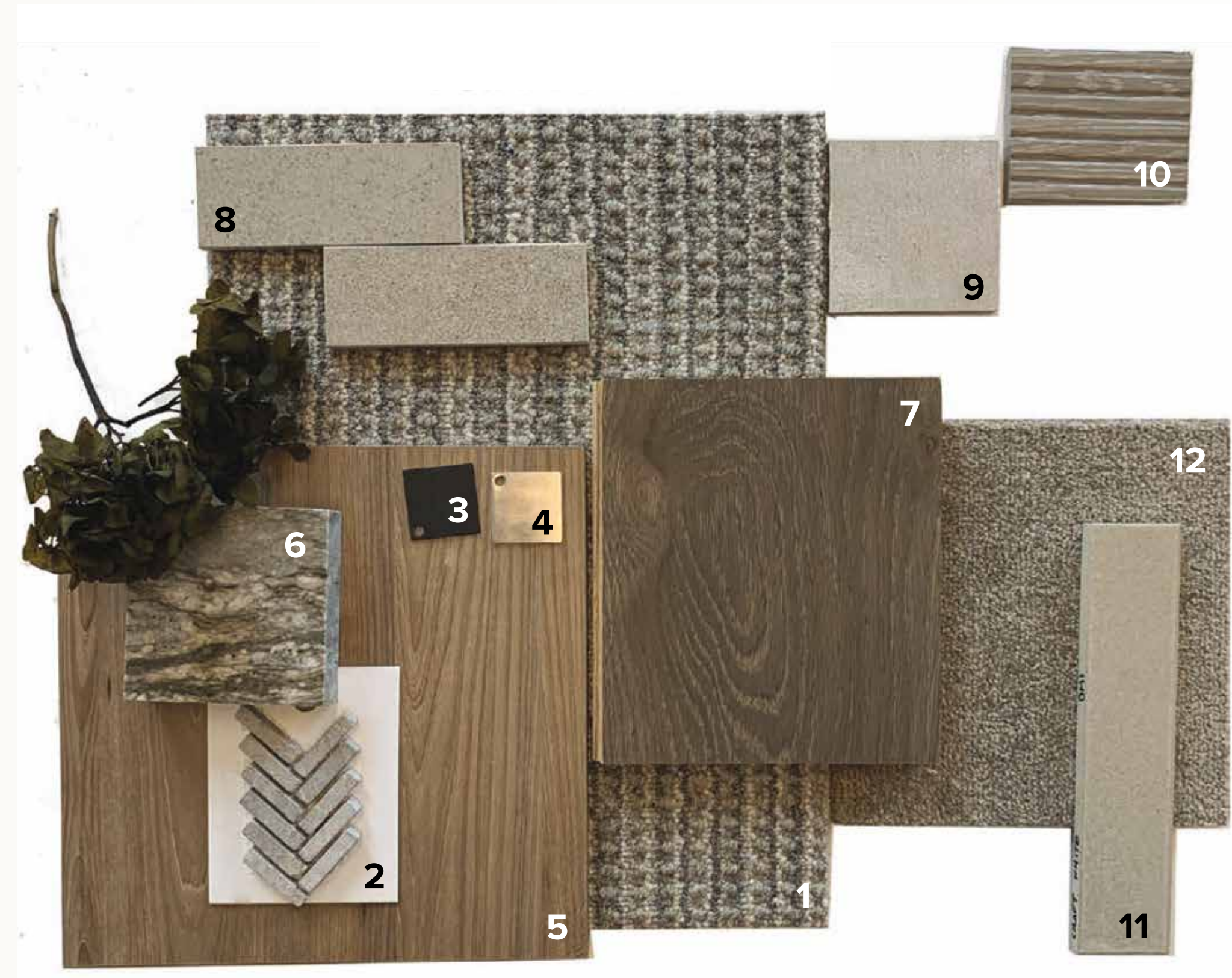
1. Primary Bedroom Carpet
2. Kitchen Backsplash
3. Door Hardware Finish
4. Plumbing Fixture Finish
5. Cabinet Finish
6. Countertop
7. Wood Floor
8. Primary Bedroom Floor & Wall Tile
9. Guest Bedroom Floor Tile
10. Guest Bedroom Wall Tile I
11. Guest Bedroom Wall Tile II
12. Guest Bedroom Carpet



INTERIOR DESIGN PACKAGE (2)

RUGGED COLORADO REDEFINED

1. Primary Bedroom Carpet
2. Kitchen Backsplash
3. Door Hardware Finish
4. Plumbing Fixture Finish
5. Cabinet Finish
6. Countertop
7. Wood Floor
8. Primary Bedroom Floor & Wall Tile
9. Guest Bedroom Floor Tile
10. Guest Bedroom Wall Tile I
11. Guest Bedroom Wall Tile II
12. Guest Bedroom Carpet



INTERIOR DESIGN PACKAGE (3)

BOLD ALPINE ELEGANCE

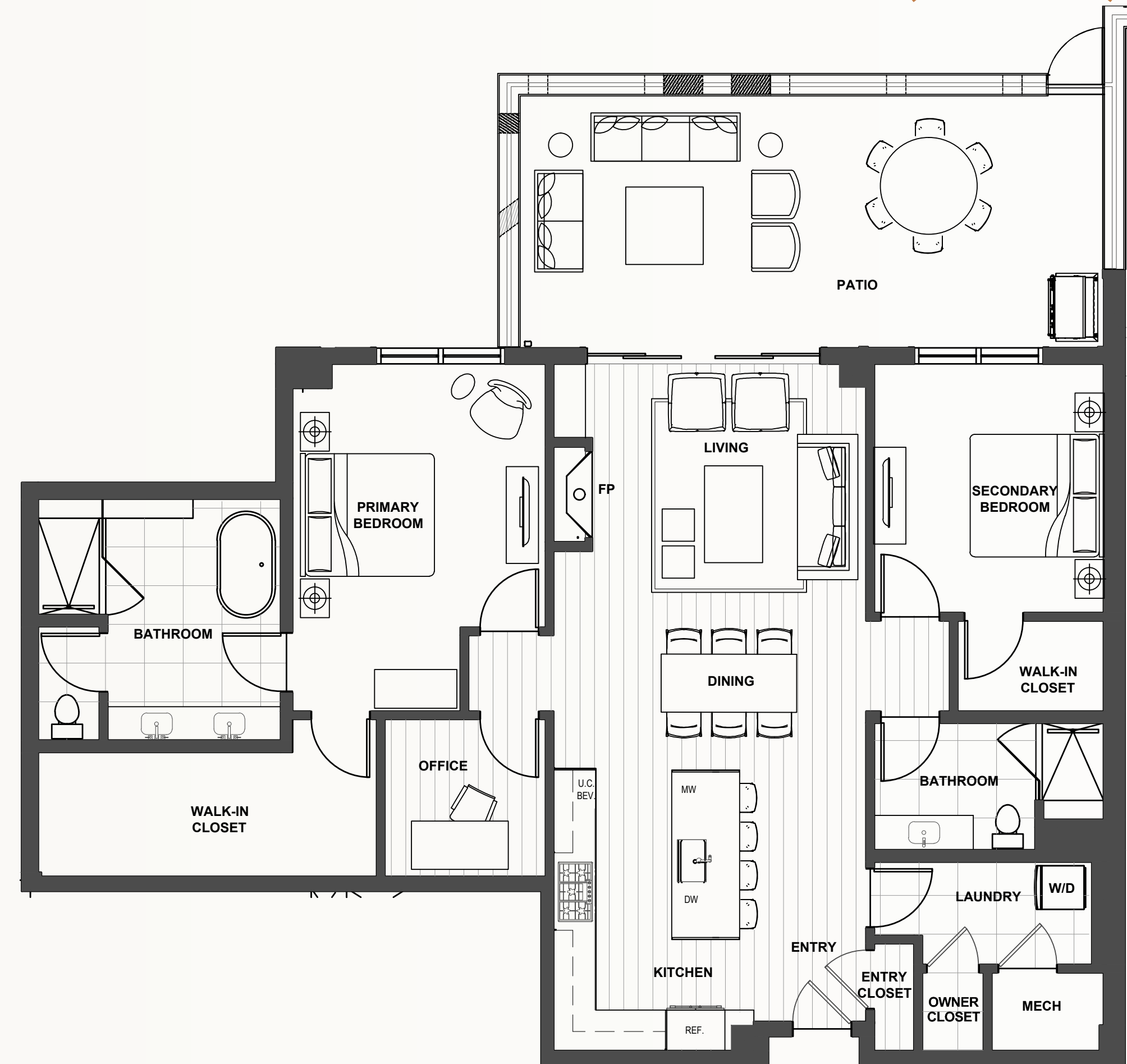
1. Primary Bedroom Carpet
2. Kitchen Backsplash
3. Door Hardware Finish
4. Plumbing Fixture Finish
5. Cabinet Finish
6. Countertop
7. Wood Floor
8. Primary Bedroom Floor Tile
9. Primary Bedroom Floor Wall Tile
10. Guest Bedroom Floor Tile
11. Guest Bedroom Wall Tile I
12. Guest Bedroom Wall Tile II
13. Guest Bedroom Carpet



2-BEDROOM + OFFICE RESIDENCE (206)

2-Bed | 2-Bath | Office

1,604 sf + 413 sf Patio



2-BEDROOM + DEN RESIDENCE (309)

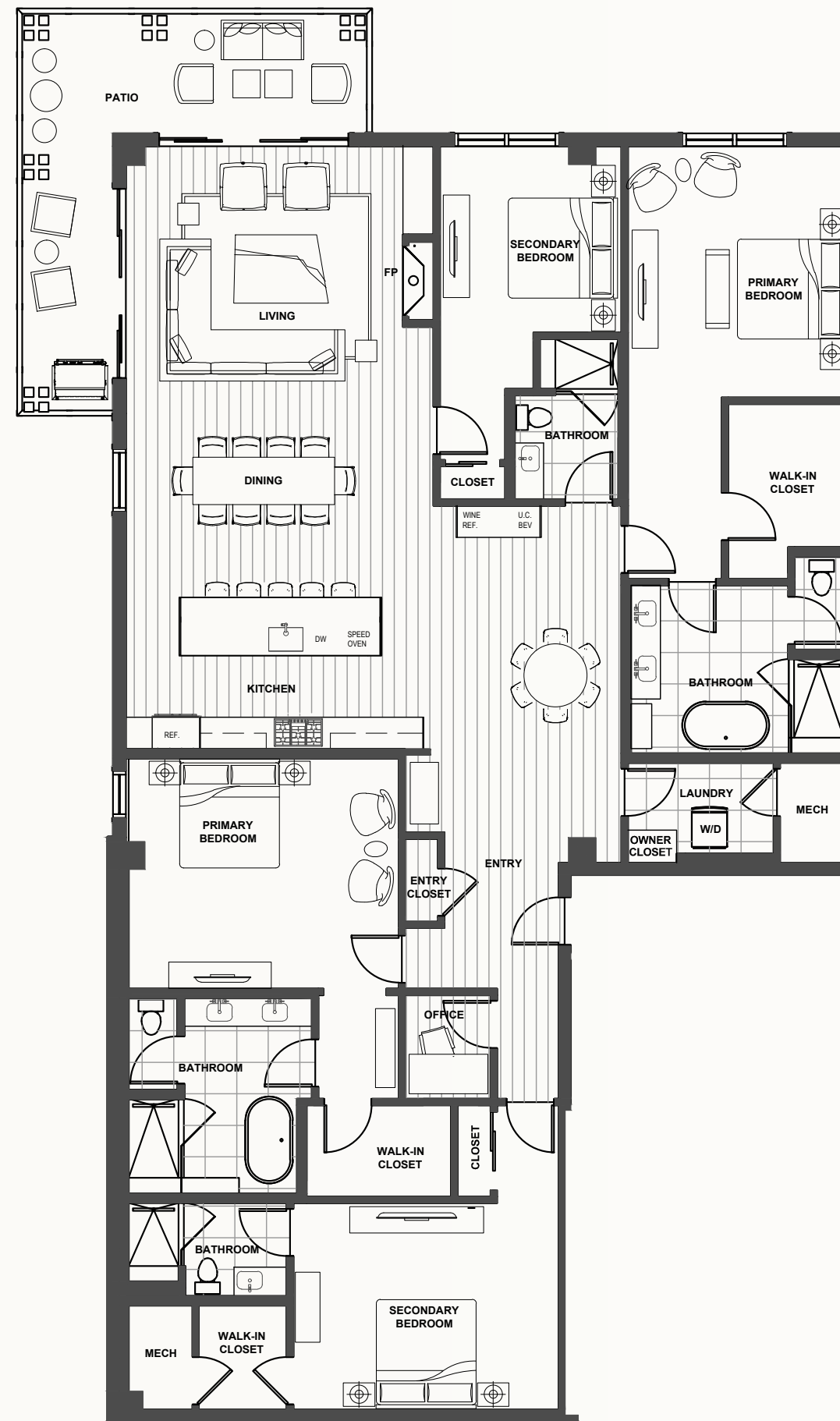
2-Bed | 3-Bath | Den
1,910 sf + 120 sf Balcony



4-BEDROOM + OFFICE RESIDENCE (414)

4-Bed | 4-Bath | Office

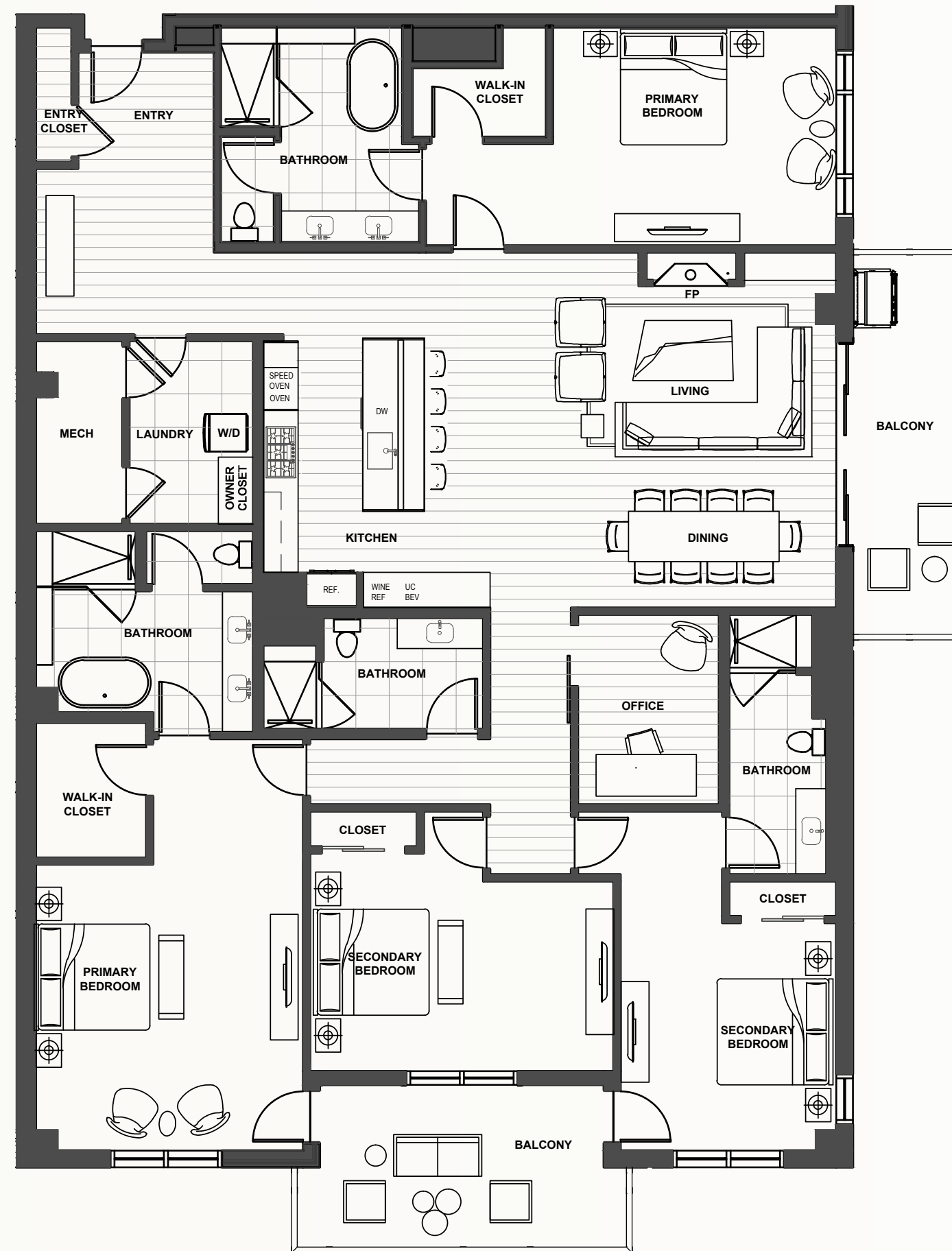
3,015 sf + 290 sf Balcony



4-BEDROOM + OFFICE RESIDENCE (413)

4-Bed | 4-Bath | Office

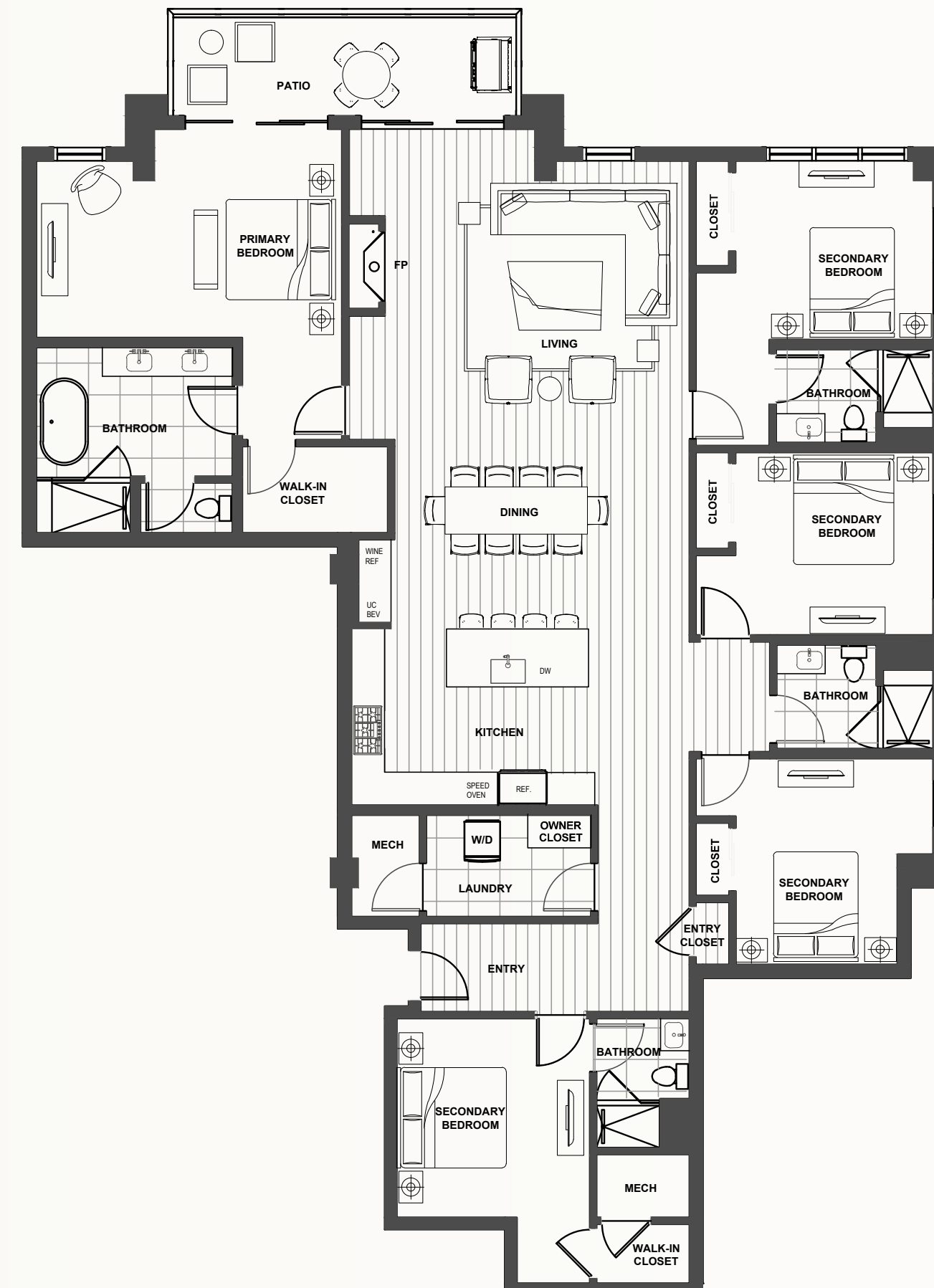
3,066 sf + 369 sf Balconies



5-BEDROOM RESIDENCE (302)

5-Bed | 4-Bath

2,662 sf + 152 sf Balcony



An aerial night photograph of a mountain resort. The scene is dominated by snow-covered slopes and dense evergreen forests. In the foreground, a large resort complex with multiple buildings is illuminated with warm yellow lights. A prominent, long, multi-story building is particularly bright. To the right, a village-like area with smaller houses and buildings is also lit up. A winding road or path is visible, marked with a series of small lights. The background shows more snow-covered mountain peaks under a dark, twilight sky. The word "LOCATION" is written in large, white, sans-serif capital letters across the center of the image.

LOCATION

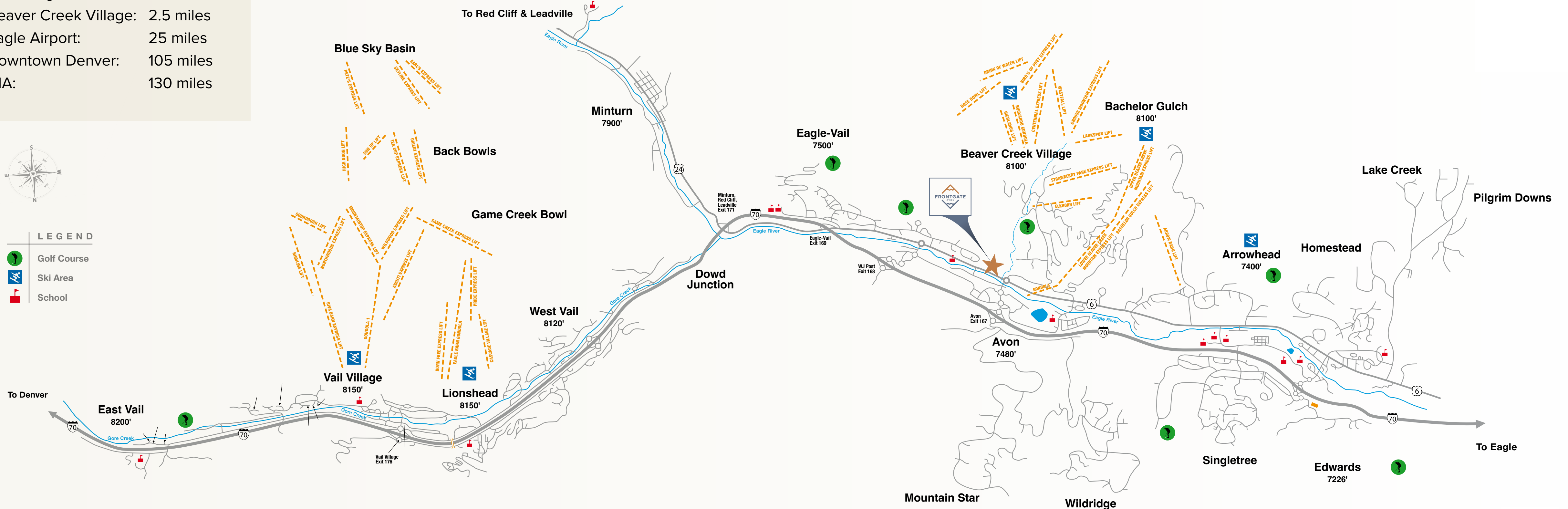
FRONTGATE TO:

- Vail Village: 10 miles
- Beaver Creek Village: 2.5 miles
- Eagle Airport: 25 miles
- Downtown Denver: 105 miles
- DIA: 130 miles



LEGEND

- Golf Course
- Ski Area
- School



Map not to scale.

DINING

- Grouse Mountain Grill
- Norawa Sushi & Tappanyaki
- Northside Kitchen
- Southside Benderz
- Splendido at The Chateau
- Agave

- Avon Bakery & Deli
- Bob's Place (Sports bar)
- Ekahi Grill
- Maya
- Mirabelle
- Ticino
- Vin48

PARKS

- Avon Whitewater Park
- Nottingham Park

ENTERTAINMENT

- Avon Performance Pavillion
- Walking Mountains Science Center
- Avon Recreation Center

HOSPITALS

- Vail Health
- Buck Creek

RESORT & SPA

- Beaver Creek Resorts
- Weston Riverfront Resort & Spa Gondola
- Beaver Creek Village

ERRANDS

- City Market
- Walmart
- Home Depot
- Walgreens

SHOPPING

- Chapel Square
- Christy Sports

TRANSPORTATION

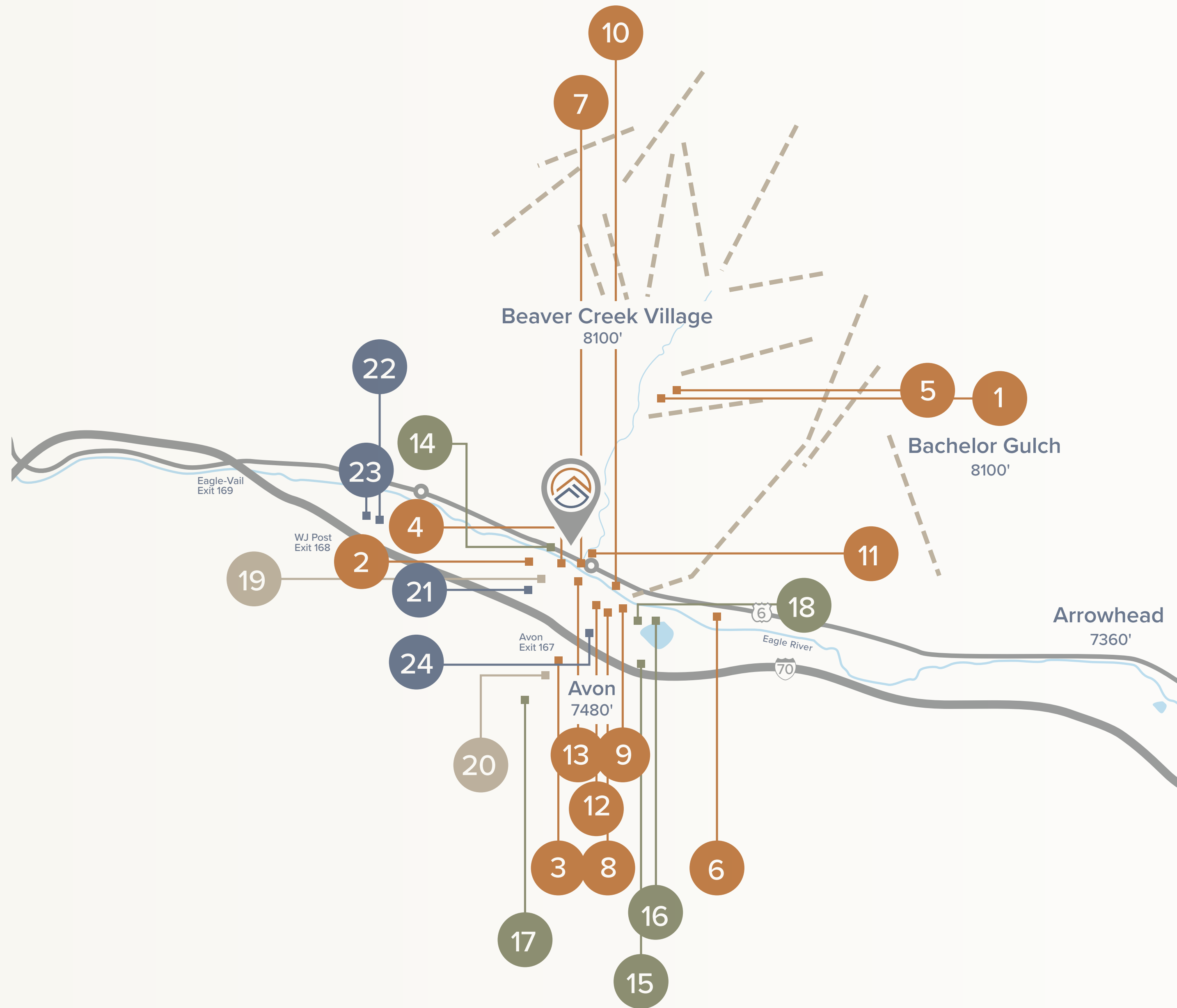
- Eco Transit Bus
- Riverfront Express Gondola
- Lower Beaver Creek Mountain Express Lift 15
- Eagle Airport & Private Jet Center
- Beaver Creek Landing Lift
- Beaver Creek Parking Lots (Elk & Bear Lots)

GOLF

- Vail Golf Course
- Eagle-Vail Golf Course
- Beaver Creek Golf Course
- Sonnenalp Golf Course
- Country Club of the Rockies
- The Valley Course

This does not constitute an offer to sell nor the solicitation of an offer to purchase made in any jurisdiction, including New York, where registration is required. The Project is under development and is not yet complete. The depictions and design of the Project as shown are based on current development plans. Development plans and all improvements, features, land uses, amenities, floor plans, specifications, furnishings, trim, and other information shown here or in any renderings, illustrations, photos, simulated views, graphic images, maps, or other visual depictions are illustrative only and may be changed without notice. No guarantees are made that the Project will be constructed, or if constructed, that the Project will be built, used, operated, or sold in conformance with this information. All rights reserved.





AVON & BEAVER CREEK POINTS OF INTEREST

DINING

- 1. Grouse Mountain Grill
- 2. Nozawa Sushi & Hibachi
- 3. Northside Kitchen
- 4. Southside Benderz
- 5. Splendido at The Chateau
- 6. Agave
- 7. Avon Bakery & Deli
- 8. Bob's Place
- 9. Ekahi Grill
- 10. Maya
- 11. Mirabelle
- 12. Ticino
- 13. Vin48

RECREATION

- 14. Avon Whitewater Park
- 15. Nottingham Park & Lake
- 16. Avon Performance Pavilion at Nottingham Park
- 17. Avon Recreation Center
- 18. Walking Mountains Science Center

HEALTH CARE

- 19. Vail Health Urgent Care
- 20. Buck Creek Medical Plaza

CONVENIENCE

- 21. City Market
- 22. Walmart
- 23. Home Depot
- 24. Walgreens



MEET THE TEAM



BGV AVON, LLC

The Frontgate | Avon development partners have successfully developed and operated several of the most celebrated luxury condominium and resort properties in Eagle and Summit Counties over the last three decades. They have a proven track record of delivering progressive, multifaceted development communities, successfully closing over \$2.2 billion in transactions with over 23,000 owners in the last three decades. These resort communities have been built on the belief that success is determined by the projects' positive impact on the lives and experiences of owners, guests, employees, and the local community.



MIKE DUDICK
PARTNER



GRAHAM FRANK
PARTNER



ARCHITECTURE & DESIGN

Unlike other large design firms, DTJ specializes in a hands-on, customized approach that pushes the boundaries of conventional design, while bringing the best version of their client's vision to life. Together, they craft spaces and destinations that resonate with the marketplace, excite the imagination, and stir the soul.



Styleworks is an award-winning boutique interior design firm specializing in hospitality, multi-family, higher education, and residential projects. Founded in 2002, they are a dynamic, passionate, and dedicated team of professionals striking balance between purpose and innovation.

STYLEWORKS



An aerial view of a resort pool complex at dusk. The scene features a large multi-story resort building on the left with balconies and a stone base. In the center, a large rectangular pool is illuminated with blue lights, with a blue water slide curving down into it. To the right, a smaller octagonal pool has a waterfall feature. The entire pool area is surrounded by a stone-paved deck with lounge chairs, tables, and various plants. The background is a steep, rocky hillside with trees and colorful birdhouses. The text "PROJECT MILESTONES" is overlaid in the center in white, bold, sans-serif font.

PROJECT MILESTONES



PROJECT MILESTONES

