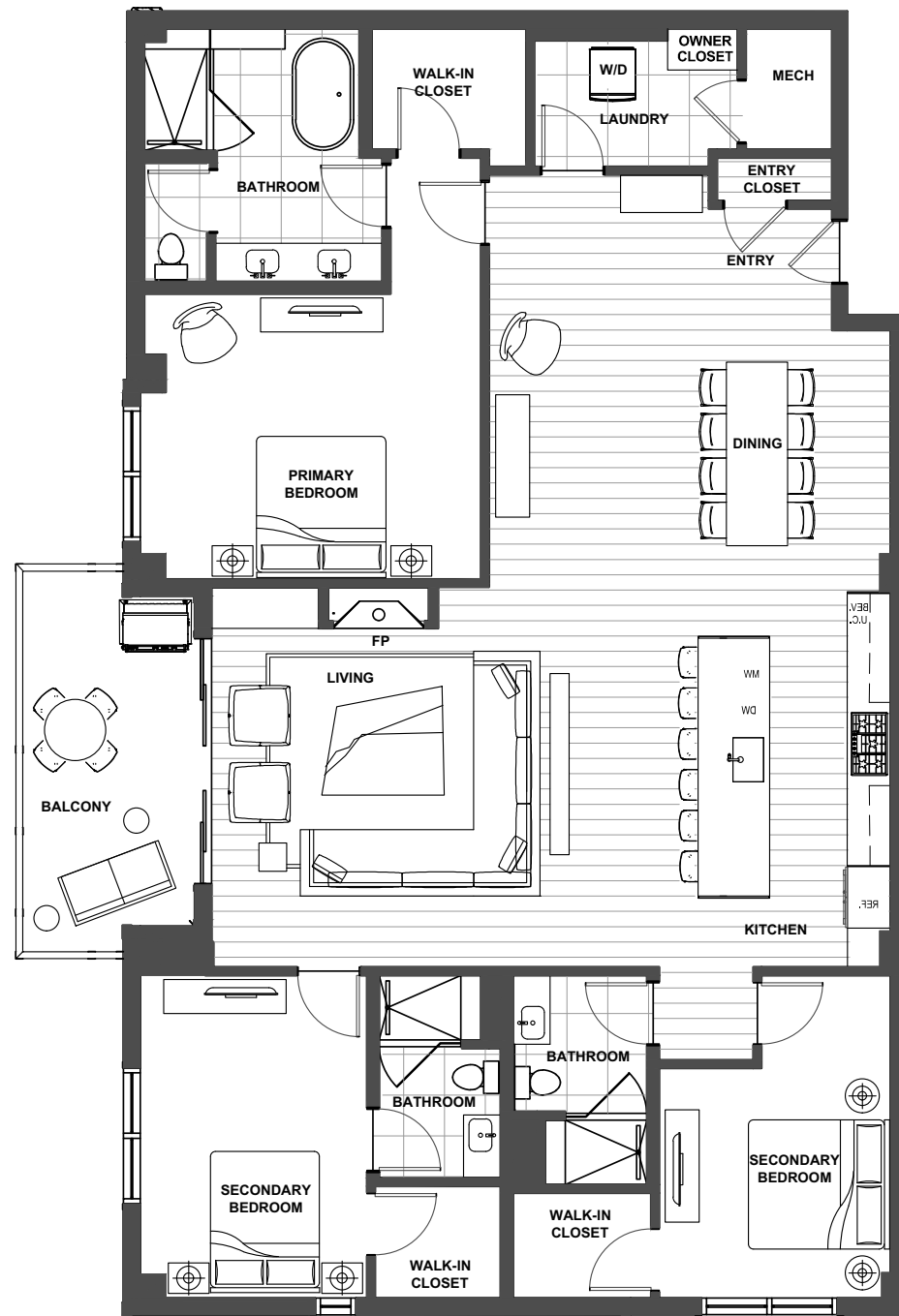
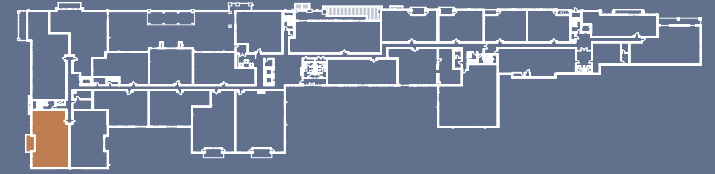





RESIDENCE 203

3-Bed | 3-Bath
2,166 sf + 164 sf Patio



A LIMITED COLLECTION OF MODERN MOUNTAIN RESIDENCES

This does not constitute an offer to sell nor the solicitation of an offer to purchase made in any jurisdiction nor made to residents of any jurisdiction, including New York, where registration is required. The Project is under development and is not yet complete. The depictions and design of the Project as shown are based on current development plans. Development plans and all improvements, features, land uses, amenities, floor plans, specifications, furnishings, trim, and other information shown here or in any renderings, illustrations, photos, simulated views, graphic images, maps, or other visual depictions are illustrative only and may be changed without notice. No guarantees are made that the Project will be constructed, or if constructed, that the Project will be built, used, operated, or sold in conformance with this information. All rights reserved. 

The Project is under development and is not yet complete. All floor plans, specifications, furnishings, finishes, equipment, trim, features, amenities, and any other characteristics shown here or in any renderings, illustrations, photos, designs, or other visual depictions are illustrative only and may be changed without notice. Statements of approximate square footages are subject to change. Square footage calculations may be made in a variety of manners, and square footage statements cannot be relied upon in deciding to purchase property in the Project or in establishing a purchase price.